

Sywell CEVA Primary School

Accessibility Plan 2016

At Sywell CEVA Primary School our values reflect our commitment to a school where there are high expectations of everyone both academically and personally. Children are provided with high quality learning opportunities so that each child attains and achieves all that they are able to. Everyone in our school is important and included. We promote a Christian ethos of care and trust where every member of our school community feels that they truly belong and are valued. We work hard to ensure that everyone is seen as an individual, recognising everyone's uniqueness and success. We recognise learning in all its forms and are committed to nurturing lifelong learners. We are a safe school, committed to improving children's confidence and self-esteem. We know that safe and happy children achieve.

This Accessibility Plan is drawn up in compliance with current legislation and requirements as specified in Schedule 10, relating to Disability, of the Equality Act 2010. School Governors are accountable for ensuring the implementation, review and reporting of progress of the Accessibility Plan over a prescribed period.

The Equality Act 2010 replaced all existing equality legislation, including the Disability Discrimination Act. The effect of the law is the same as in the past, meaning that "schools cannot unlawfully discriminate against pupils because of sex, race, disability, religion or belief and sexual orientation".

According to the Equality Act 2010 a person has a disability if:

- (a) He or she has a physical or mental impairment, and
- (b) The impairment has a substantial and long-term adverse effect on his or her ability to carry out normal day-to-day activities.

The Accessibility Plan is structured to complement and support the school's Equality Objectives, and will similarly be published on the school website. We understand that the Local Authority will monitor the school's activity under the Equality Act 2010 (and in particular Schedule 10 regarding Accessibility) and will advise upon the compliance with that duty.

Objectives

Sywell CEVA Primary School is committed to providing an environment that enables full curriculum access that values and includes all pupils, staff, parents and visitors regardless of their education, physical, sensory, social, spiritual, emotional and cultural needs. We are committed to taking positive action in the spirit of the Equality Act 2010 with regard to disability and to developing a culture of inclusion, support and awareness within the school.

The school recognises and values parent's knowledge of their child's disability and its effect on their ability to carry out everyday activities and respects the parent's and child's right to confidentiality.

The Sywell CEVA Primary School Accessibility Plan shows how access is to be improved for disabled pupils, staff and visitors to the school within a given timeframe and anticipating the need to make reasonable adjustments to accommodate their needs where practicable.

The Accessibility Plan contains relevant and timely actions to:-

- Increase access to the curriculum for pupils with a physical disability and/or sensory impairments, expanding the curriculum as necessary to ensure that pupils with a disability are as equally prepared for life as the able-bodied pupils; (If a school fails to do this they are in breach of their duties under the Equalities Act 2010); this covers teaching and learning and the wider curriculum of the school such as participation in after-school clubs, leisure and cultural activities or schools visits – it also covers the provision of specialist or auxiliary aids and equipment, which may assist these pupils in accessing the curriculum within a reasonable timeframe;
- Improve and maintain access to the physical environment of the school, adding specialist facilities as necessary – this covers improvements to the physical environment of the school and physical aids to access education within a reasonable timeframe;
- Improve the delivery of written information to pupils, staff, parents and visitors with disabilities; examples might include hand-outs, timetables, textbooks and information about the school and school events; the information should be made available in various preferred formats within a reasonable timeframe.

The Sywell CEVA Primary School Accessibility Plan relates to the key aspects of physical environment, curriculum and written information.

Whole school training will recognise the need to continue raising awareness for staff and governors on equality issues with reference to the Equality Act 2010.

This Accessibility Plan should be read in conjunction with the following school policies, strategies and documents:

- Behaviour Management Policy
- Curriculum Policies
- Emergency Management Plan
- Health & Safety Policy
- School Development Plan
- Special Educational Needs Policy
- Teaching and Learning Policy

The Accessibility Plan for physical accessibility relates to the Access Audit of the School, which remains the responsibility of the governing body. It may not be feasible to undertake all of the works during the life of this accessibility plan and therefore some items will roll forward into subsequent plans. An accessibility audit will be completed by the school prior to the end of each period covering this plan in order to inform the development of a new Accessibility Plan for the ongoing period.

Equality Impact Assessments will be undertaken as and when school policies are reviewed. The terms of reference for all governors' committees will include the need to consider Equality and Diversity issues as required by the Equality Act 2010.

The Accessibility Plan will be published on the school website.

The Accessibility Plan will be monitored through the Resources Committee.

The Accessibility Plan may be monitored by Ofsted during inspection processes in relation to Schedule 10 of the Equality Act 2010.

Approved : July 2016

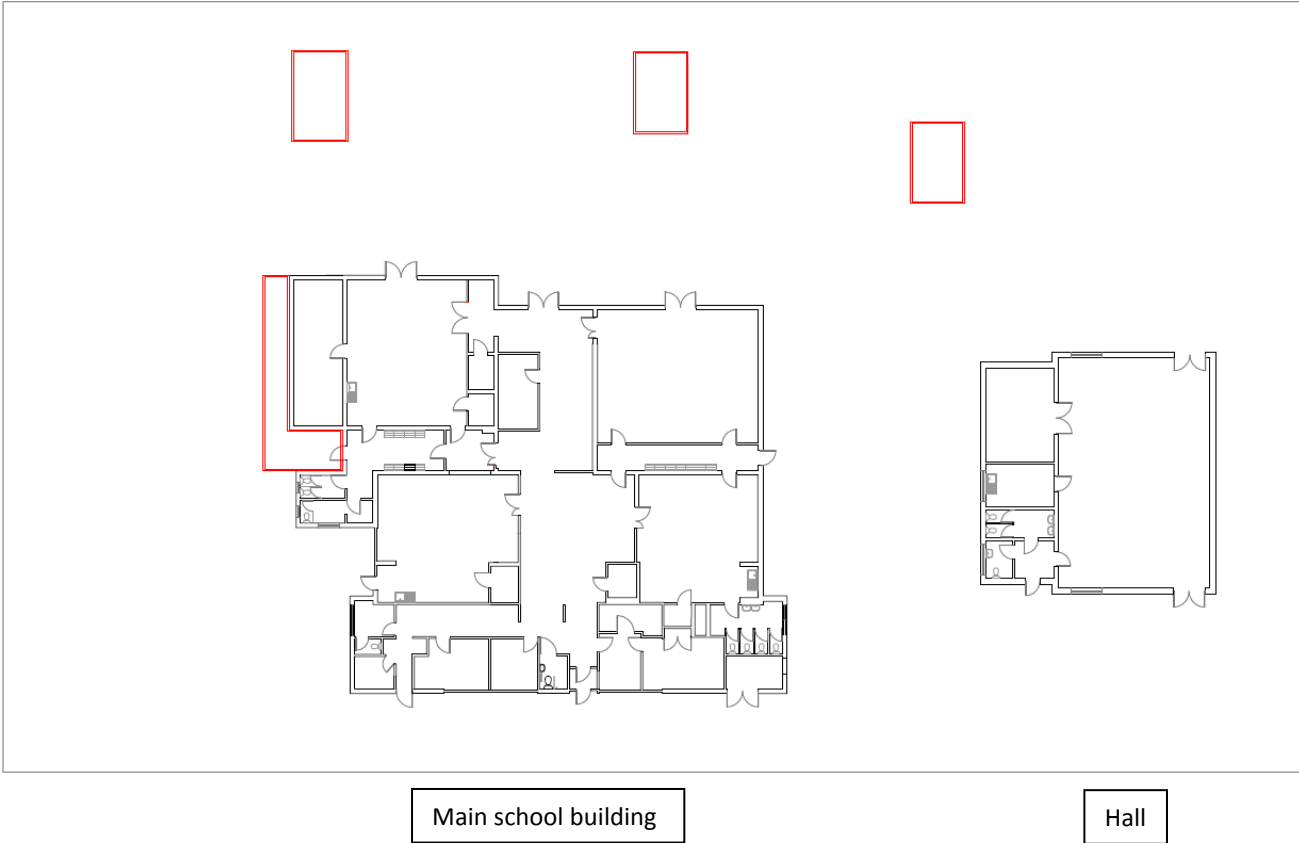
Review Date: Term 5 2018

It is a requirement that the school's accessibility plan is resourced, implemented, reviewed and revised as necessary and reported on annually. Attached is a set of action plans showing how the school will address the priorities identified in the plan.

The priorities for the Accessibility Plan for our school were identified by:

- **The Governing Body**
- **Head Teacher**
- **Senior Teachers**
- **School Bursar**
- **Site Supervisor**

A plan of the school buildings to show access points for the school:



Sywell CEVA Primary

ACCESSIBILITY PLAN

An Access Audit was carried out by the HT and Link Governor in March 2016. A number of recommendations were made as follows:

Access Report Ref.	Item	Activity	Timescale	Cost
1.	External Steps	Mark steps with yellow highlighting paint in the following areas: Step to KS1 double doors	Sep 16	£20
2.	Wheelchair access to school – signage	Purchase signage to direct disabled visitors to the side/rear of school for access	Sep 2016	£30
3.	Lighting to the side of school	One light needs replacing and need to set timers to remain on until 10pm	Sep 2016	£TBC
4.	Lighting to the rear of school	Purchase and install PIR lights	Sep 2016	£150
5.	Fire Exit Doors	Yellow paint to door thresholds	Sep 2016	£20

Sywell CEVA Primary

ACCESSIBILITY PLAN

Schedule 21: Action Plan A – Improving Physical Access

Ref	Question	Recommendations	Time Scale	Priority	Cost	Date Completed	Responsibility:
							Staff Member
1	Corridor	Keep corridors clear from obstructions.	Immediate	High	None	Ongoing	All
2	Wheelchair access to main school building	Direct wheelchair users to access playground to enter school at the rear of the building independently	July 2016	Medium	£30		Site Supervisor
3	Disabled parking	Space to be provided and signage purchased	July 2016	Medium	£20		Site Supervisor
4	Disabled Toilet	In place in KS1, None in KS2. In place in Staff toilet and hall. Repair needed in staff toilet	June 2016	Low	None		Site Supervisor
5	Changing facilities	In place in KS1					
6	External doors	Check single door dimensions to see if wheelchair access is possible – investigate height of door sill		Low			Headteacher/Site Supervisor

Sywell CEVA Primary

School **ACCESSIBILITY**

PLAN

Schedule 22: Action Plan B – Improving Curriculum Access

Ref	Question	Recommendations	Time Scale	Priority	Cost	Date Completed	Responsibility
							Staff Member:
1	Differentiation in Teaching	SMT to monitor quality of differentiation and provision for SEND pupils.	Summer Term 2016	High	SMT release costs		SENCo
2	Interventions	SENCo to audit current interventions and their success/impact on progress. Provision mapping to be used across all year groups	Summer Term 2016	High	Resourcing costs of identified areas to develop		SENCo
3	Classrooms are organised to promote the participation and independence of all pupils	SMT to carry out an audit of resources /QFT to ensure that lessons are planned to meet the needs of all pupils in the class	Summer Term 2016	High	Possible resource implications where gaps are identified		SMT
4	Staff training in the production, implementation and review of provision map and monitoring systems	Headteacher/SENCo to deliver staff training to teaching staff.	Ongoing	High	Not applicable		HT

5	Staff training in supporting pupils with SEND	Training identified and completed as necessary	Ongoing	High	CPD for staff External specialist costs		HT
---	---	--	---------	------	--	--	----

Sywell CEVA Primary

School ACCESSIBILITY

PLAN

Schedule 23 Action Plan C – Improving the Delivery of Written Information

Ref	Question	Recommendations	Time Scale	Priority	Cost	Date Completed	Responsibility
							Staff Member:
1	Availability of written material in alternative formats when specifically requested	VITAL team in place and able to enlarge materials	Ongoing		Not applicable		VITAL TA
2	(When relevant) Review documentation on website to check accessibility for parents with English as an Additional Language	The school will review formats publicised on school website – particularly for new parents to the school, in order to ensure accessibility for parents with English as an additional language.	Ongoing		Not applicable		Bursar